

State of Wyoming Corner Record

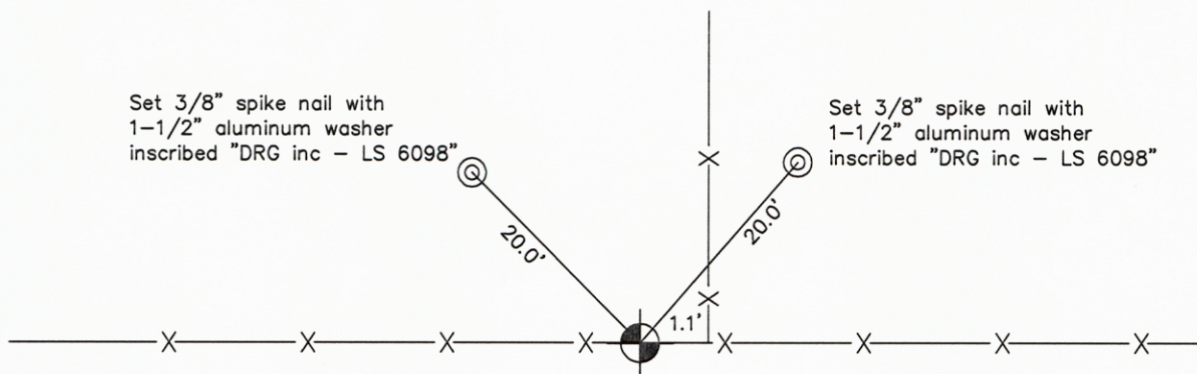
(In compliance with the **CORNER PERPETUATION AND FILING ACT**, Wyoming Statutes, 1997 Section 33-29-140 et. seq., and the Rules and Regulations of the Board of Professional Engineers and Professional Land Surveyors)

Reverse side of this form may be used if more space is needed.

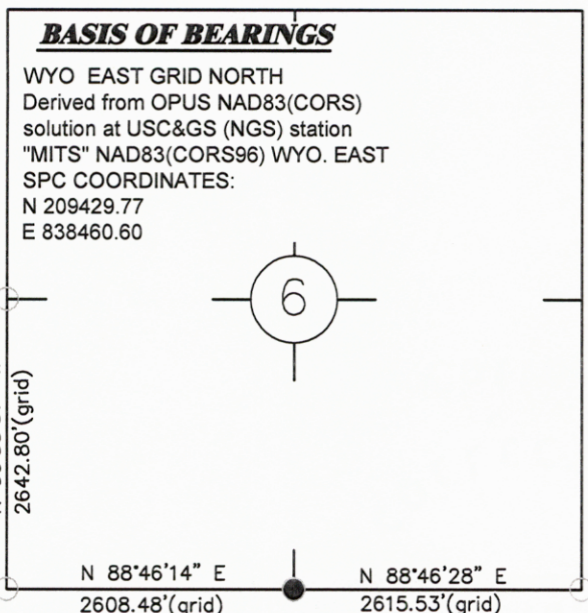
Record of original survey and citation of source of historical information (if corner is lost or obliterated). Description of corner monumentation evidence found and/or monument and accessories established to perpetuate the location of this corner. Sketch of relative location of monument, accessories, and reference points with course and distance to adjacent corner(s) (if determined in this survey). Method and rationale for reestablishment of lost or obliterated corner.

U.S.G.L.O. 1911 Dependent ReSurvey Record: Set a iron post, 3 ft. long, 1 inch diam., 2-1/2 ft. in the ground, for 1/4 sec. cor. and mark on the brass cap on the post 1/4 S 6 on the N. and S 7 on the S. half.

Found a USGLO standard 2-1/2" Brass Cap on a 1" iron pipe 1.2' above ground, inscribed as shown below.



Monument location



WYO. SPC EAST GRID NORTH

Found a USGLO standard 2-1/2" Brass Cap on a 1" iron pipe 1.2' above ground and inscribed as shown below.



Monument Inscription

Date of Field Work: 6/12/11

Office Reference: 18676

Cross Index Plat

	1	2	3	4	5	6	7	8	9	10	11	12	13	14	15	16	17	18	19	20	21	22	23	24	25
A																									
B																									
C			6		5				4					3					2						1
D																									
E																									
F																									
G																									
H																									
J																									
K																									
L																									
M																									
N																									
O																									
P																									
Q																									
R																									
S																									
T																									
U																									
V																									
W																									
X																									
Y																									
Z																									
	1	2	3	4	5	6	7	8	9	10	11	12	13	14	15	16	17	18	19	20	21	22	23	24	25

Firm/Agency, Address

RONALD C. RENNKE
D. R. GRIFFIN & ASSOCIATES
1414 ELK STREET
ROCK SPRINGS, WYOMING 82901
 Telephone Number: (307) 362-5028

This corner record was prepared by me or under my direction and supervision.

SEAL & SIGNATURE



RECORDED 8/09/2011 AT 10:08 AM REC# 573724 BK# 2231 PG# 408
 DEBRA K. LATHROP, CLERK OF LARAMIE COUNTY, WY PAGE 1 OF 1

Corner Name South 1/4 Corner Section 6, T 12 N, R 63 W, 6th P.M.
 County: Laramie, Wyoming

Cross-Index No.: E-3

SBPPEPLS/PLSW: March 1994; PLSW January 1998